

Installing Apache:

We will be installing **Apache version 2.2.4**. Follow the steps carefully.

1. Go to www.apache.org and download "Win32 Binary (MSI Installer): apache_2.2.4-win32-x86-no_ssl.msi" to your desktop.

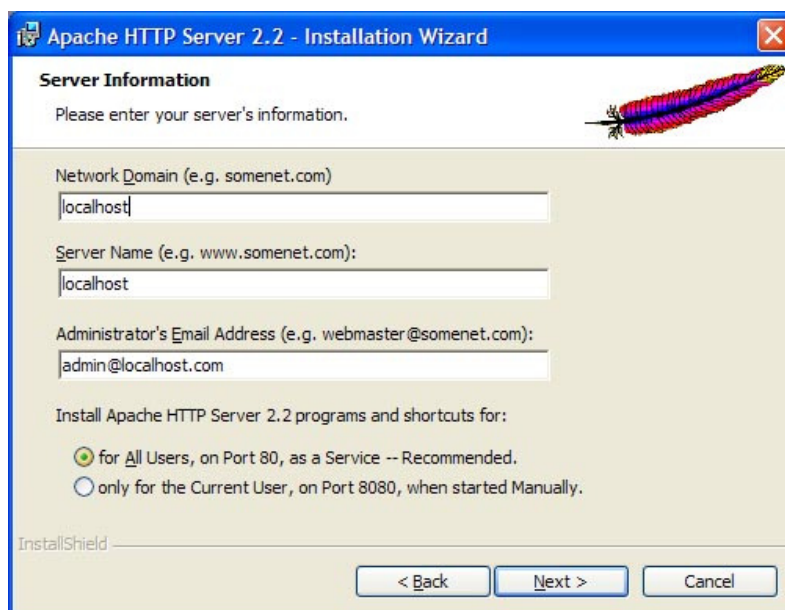
Note: Make sure that you download Apache version 2.2.4 (Win32 Binary MSI Installer)! The rest of the tutorial is written using this version.

2. Double click "apache_2.2.4-win32-x86-no_ssl.msi", and if prompted, click "run".
3. An installation wizard will appear:



Click "Next".

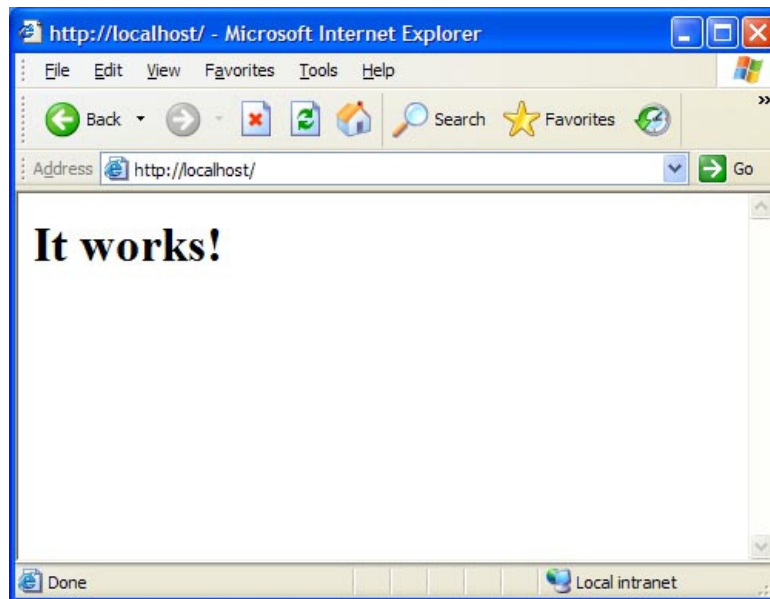
4. The next page contains the terms of agreement. Select "I accept", and click "Next".
5. Read about the Apache Server, and click "Next"
6. The next screen will ask you for specific server information. Enter the values seen below:



Click "Next".

7. On the next screen, select "Typical Installation" and click "Next".
8. Click "Next".

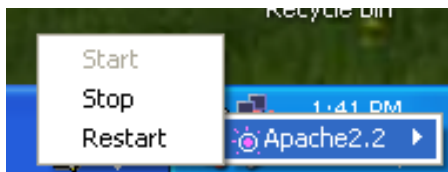
9. Click "Install".
10. Open up Internet Explorer and type in "http://localhost". If you see a page that says "It works!" then the Apache server has been installed successfully.



Now, if you look in your task bar, you should see an icon that looks like this:



That's a status indicator that says "Apache is running!" You can click it to stop Apache:



...and you should see the status change.



A few notes on your Apache Server Configuration:

- Apache is installed by default in your "C:\Program Files\Apache Software Foundation\Apache2.2" directory.
- Inside that directory there is a folder called "htdocs" (the equivalent of your \www\ or \public_html\ directory). You can develop your applications inside this folder and access them by going to http://localhost/your_file_name.php
- The Apache Configuration settings are defined in a file named "httpd.conf" located in the "conf" directory. **Do not attempt to change these settings unless you know what you're doing. An error in this file will result in the Apache Server not functioning correctly!**

To install IIS using the Configure Your Server Wizard

1.	From the Start menu, click Manage Your Server .
2.	Under Managing Your Server Roles , click Add or remove a role .
3.	Read the preliminary steps in the Configure Your Server Wizard and click Next .
4.	Under Server Role , click Application server (IIS, ASP.NET) and then click Next . By default, the wizard installs and enables IIS, COM+, and DTC.
5.	If you want to serve either of the optional technologies (FrontPage Server Extensions or ASP.NET), on the Application Server Options page, select the appropriate check boxes, and then click Next .
6.	Read the summary and click Next .

7.	Complete the wizard, and then click Finish .
-----------	---

Note: The **Configure Your Server Wizard** enables ASP.NET by default, unlike the **Add/Remove Windows components** install method below.

To install IIS, add components, or remove components using Control Panel

1.	From the Start menu, click Control Panel .
2.	Double-click Add or Remove Programs .
3.	Click Add/Remove Windows Components .
4.	In the Components list box, click Application Server .
5.	Click Details .
6.	Click Internet Information Services Manager .
7.	Click Details to view the list of IIS optional components. For a detailed description of IIS optional components, see "Optional Components" in this topic.
8.	Select all optional components you wish to install.